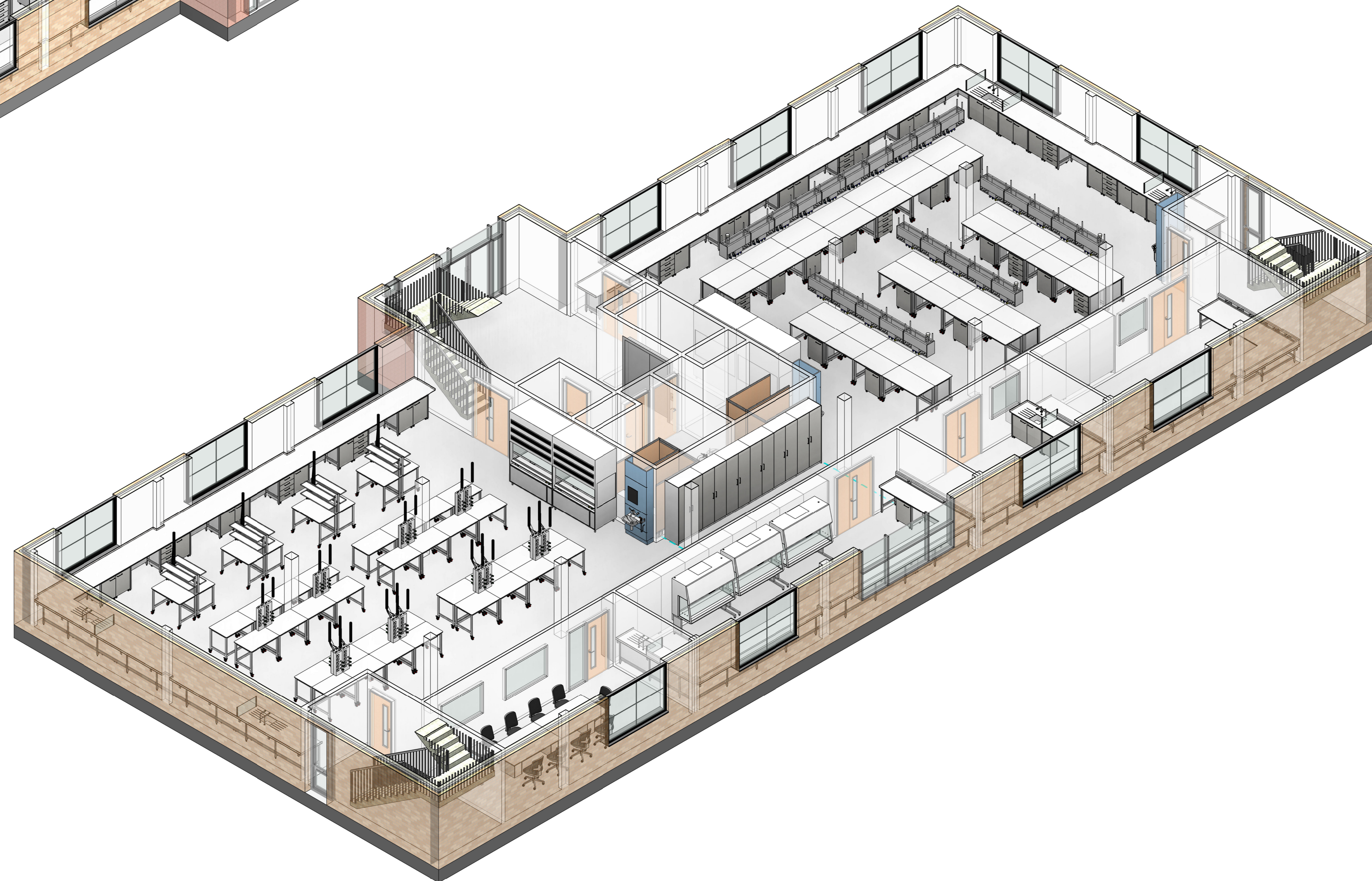


1 Ground Floor - 3D View 1



2 Ground Floor - 3D View 2

Copyright © InterFocus Ltd  
This drawing and design, together with any other intellectual property provided, is the sole property of InterFocus Ltd and must not be copied, loaned or communicated, either in whole or part, to any third party, without written consent from this company.

GENERAL NOTES:

**FURNITURE INSTALLATION**  
THE WORKTOPS ARE 930mm HIGH (UNLESS STATED OTHERWISE), WITH A 50mm HIGH REAR UPSTAND.  
WORKTOP MATERIAL IS 16mm TRESPA TOPLAB BASE  
THE SUPPORTING FRAMEWORK IS: Q 1" FRAME SYSTEM  
**THE UNITS ARE FROM OUR 'MOBILE' AND 'STATIC' RANGE:**  
CARCASS = 18mm M-MDF/MFC MELAMINE  
FRONTS = 18mm M-MDF/MFC MELAMINE  
HANDLES = LAB 102 17  
HINGES = INTERNAL 120"  
**THE LAB BENCHING IS FROM OUR 'MB' RANGE:**  
TABLES = STEEL FRAME / TRESPA WORKTOP  
CASTORS = 120mm SWIVEL BRANDED  
**THE SERVICES TO BENCHING IS FROM OUR 'FLEX' RANGE:**  
LAB GO-05 = OVERHEAD GANTRY SYSTEM (FLEX)  
LAB GO-07 = SERVICE CEILING TILE (FLEX)  
FLOOR TO CEILING = 2700mm

Rev	Date	By	Modification
A	AS DRN	PC	FIRST ISSUE



InterFocus Ltd  
Cambridge Rd, Linton,  
Cambridgeshire, CB21 4NN  
Tel: 01223 894833  
FAX: 01223 894235  
Email: [contact@interfocus.co.uk](mailto:contact@interfocus.co.uk)



[www.schoolfurniture.co.uk](http://www.schoolfurniture.co.uk) [www.mynewlab.com](http://www.mynewlab.com)

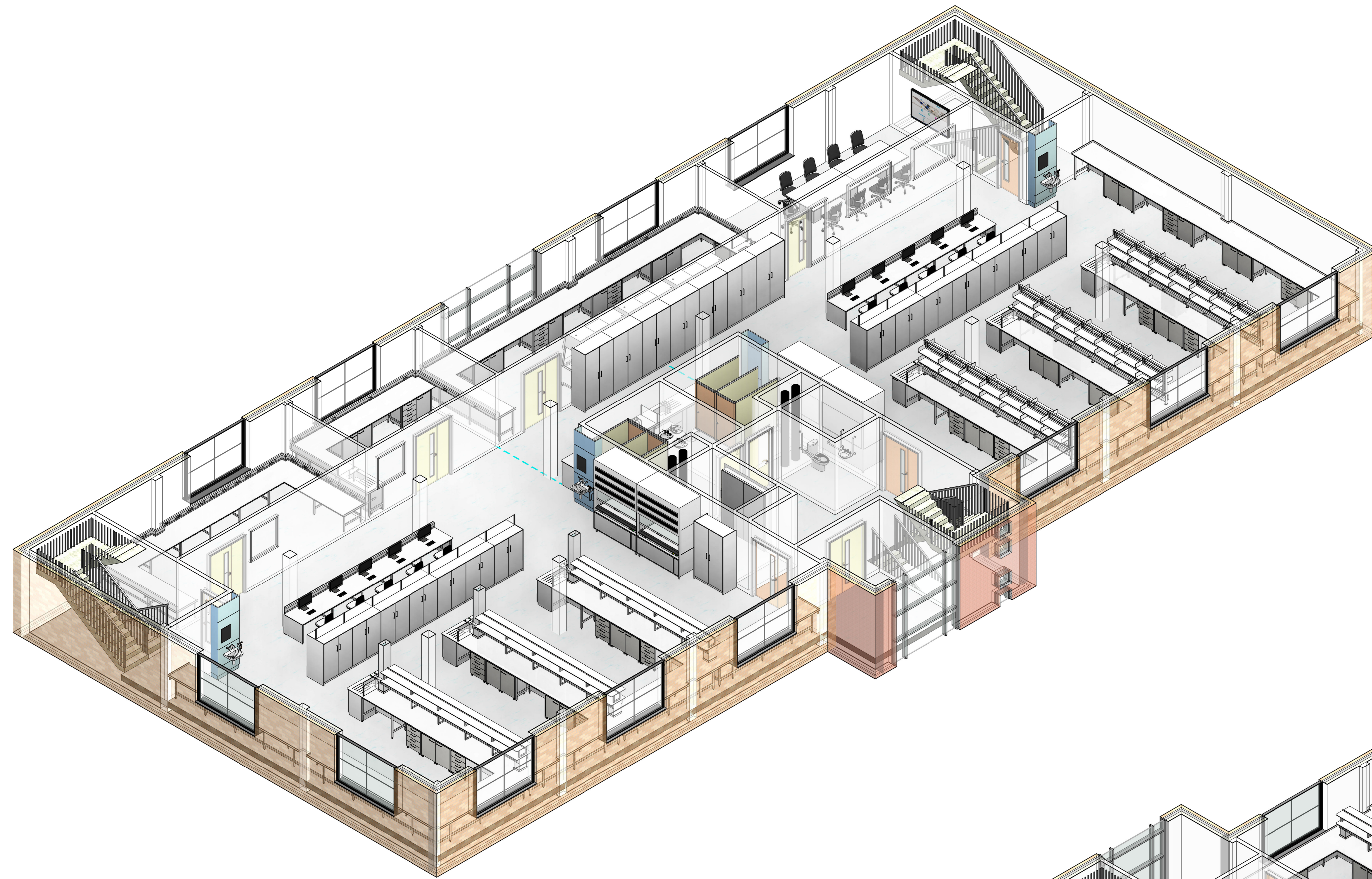
TITLE  
**Ground Floor - 3D Views**

CLIENT  
**Hamilton Land - Building 2 - The Oaks**

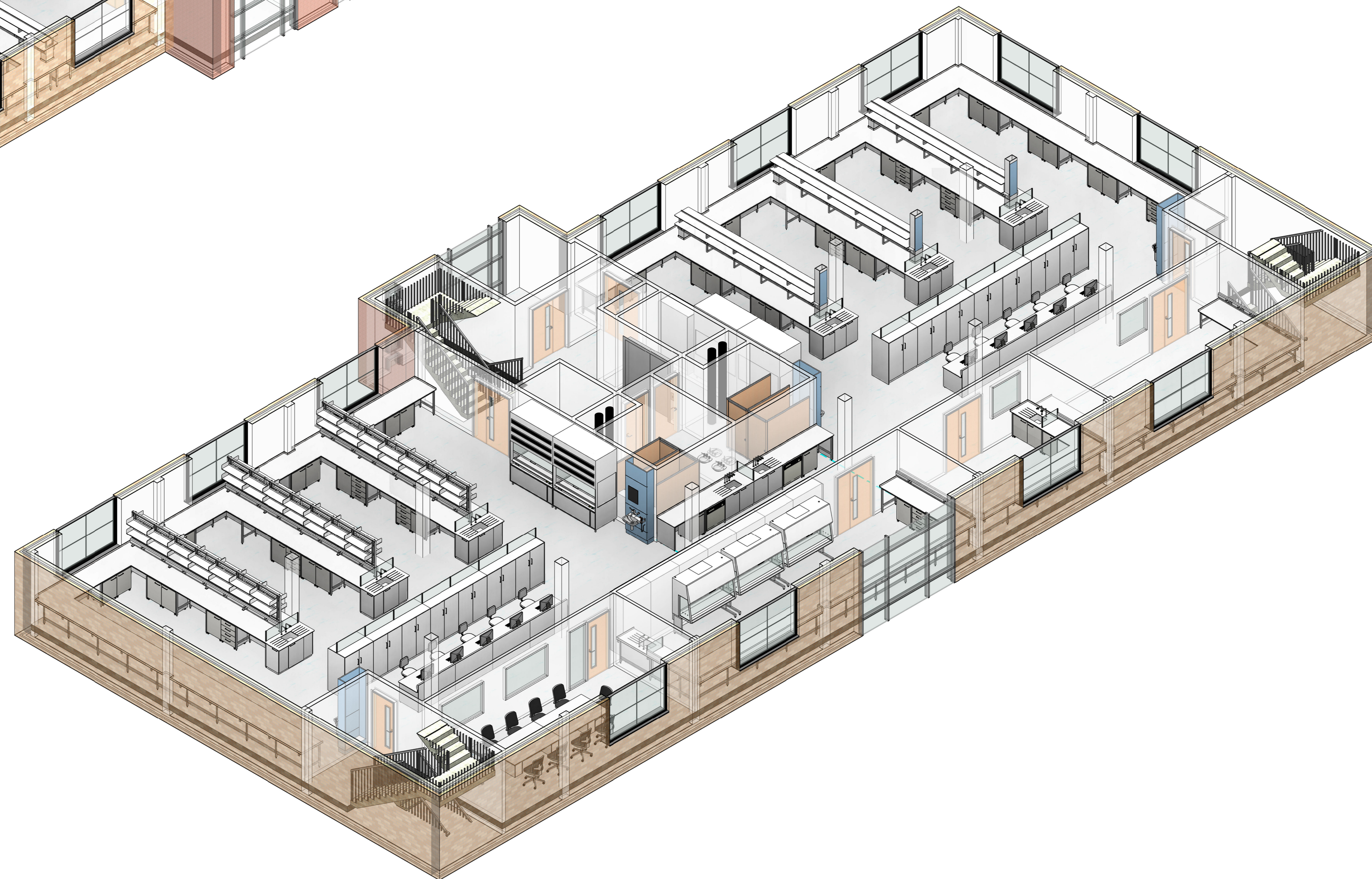
DRAWN BY: PC  
CHECKED BY: -  
DATE: 09/06/2022

SCALE: (@A0)  
PROJECT NUMBER: RQ:502206

DRAWING NUMBER: C760255-02  
REV: A



1 First Floor - 3D View 1



2 First Floor - 3D View 2

Copyright © InterFocus Ltd  
 This drawing and design, together with any other intellectual property provided, is the sole property of InterFocus Ltd and must not be copied, loaned or communicated, either in whole or part, to any third party, without written consent from this company.

GENERAL NOTES:

**FURNITURE INSTALLATION**  
 THE WORKTOPS ARE 930mm HIGH (UNLESS STATED OTHERWISE), WITH A 50mm HIGH REAR UPSTAND.  
 WORKTOP MATERIAL IS 16mm TRESPA TOPLAB BASE  
 THE SUPPORTING FRAMEWORK IS 12" H" FRAME SYSTEM  
**THE UNITS ARE FROM OUR '1 MOBILE' AND '1 STATIC' RANGE:**  
 CARCASS = 18mm M.MDF/MFC MELAMINE  
 FRONTS = 18mm M.MDF/MFC MELAMINE  
 HANDLES = LAB 192 'D'  
 HINGES = INTERNAL 120'  
**THE LAB BENCHING IS FROM OUR 'MB' RANGE:**  
 TABLES = STEEL FRAME / TRESPA WORKTOP  
 CASTORS = 120mm SWIVEL, BRAKED  
**SHELVING TO BENCHING:**  
 LAB L1-05 = RS2 2 TIER REAGENT SHELVING WITH BUILT IN SERVICE RISER  
 LAB L1-07 = AS1 ADJUSTABLE SHELVING SYSTEM WITH SHELF ENDS  
 FLOOR TO CEILING - 2700mm

Rev	Date	By	Modification
A	AS DRN	PC	FIRST ISSUE



InterFocus Ltd  
 Cambridge Rd, Linton,  
 Cambridgeshire, CB21 4NN  
 Tel: 01223 894833  
 FAX: 01223 894235  
 Email: contact@interfocus.co.uk



www.schoolfurniture.co.uk www.mynewlab.com

TITLE

First Floor - 3D Views

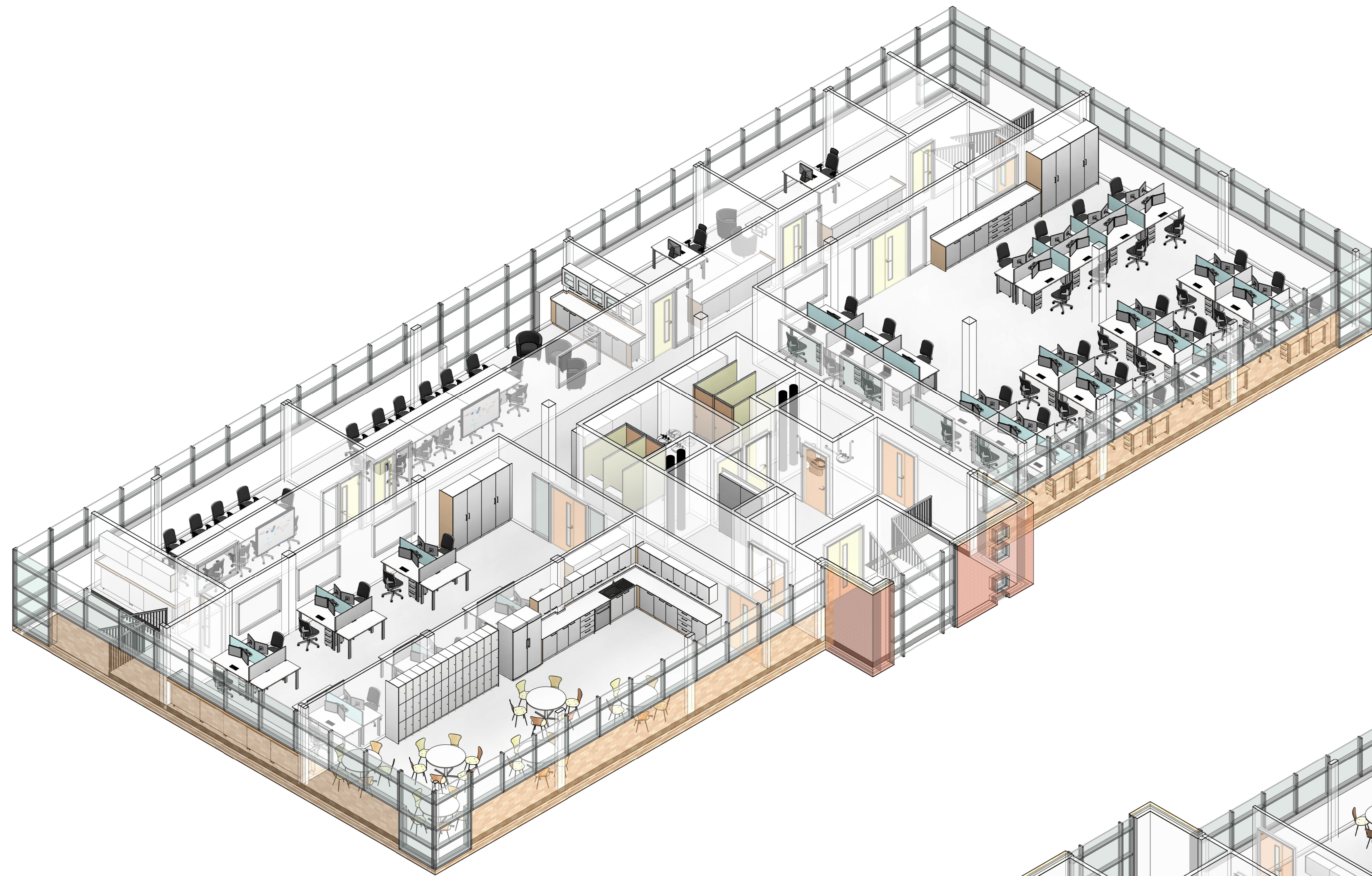
CLIENT

Hamilton Land - Building 2 - The Oaks

DRAWN BY: PC  
 CHECKED BY: -  
 DATE: 09/06/2022

SCALE: (@A0)  
 PROJECT NUMBER: RQ:502206

DRAWING NUMBER: C760255-08  
 REV: A



1 Second Floor - 3D View 1



2 Second Floor - 3D View 2

Copyright © InterFocus Ltd  
This drawing and design, together with any other intellectual property provided, is the sole property of InterFocus Ltd and must not be copied, loaned or communicated, either in whole or part, to any third party, without written consent from this company.

GENERAL NOTES:

**FURNITURE INSTALLATION**  
THE WORKTOPS ARE 900mm HIGH (UNLESS STATED OTHERWISE), WITH A 50mm HIGH REAR UPSTAND.  
WORKTOP MATERIAL IS 16mm TRESPA TOPLAB BASE AND 25mm MDF/MFC MELAMINE

**THE UNITS ARE FROM OUR 1 STATIC RANGE:**  
CARCASS = 18mm M-MDF/MFC MELAMINE  
FRONTS = 18mm M-MDF/MFC MELAMINE  
HANDLES = LAB 192 D  
HINGES = INTERNAL 120°

**THE OFFICE DESKS ARE FROM THE ADAPT RANGE:**  
DESKS = STEEL FRAME / MELAMINE WORKTOP

FLOOR TO CEILING - 2700mm

Rev	Date	By	Modification
A	AS DRN	PC	FIRST ISSUE

InterFocus Ltd  
Cambridge Rd, Linton,  
Cambridgeshire, CB21 4NN  
Tel: 01223 894833  
FAX: 01223 894235  
Email: [contact@interfocus.co.uk](mailto:contact@interfocus.co.uk)

[www.schoolfurniture.co.uk](http://www.schoolfurniture.co.uk) [www.mynewlab.com](http://www.mynewlab.com)

TITLE

Second Floor - 3D Views

CLIENT

Hamilton Land - Building 2 - The Oaks

DRAWN BY PC	CHECKED BY -	DATE 09/06/2022
SCALE (@A0)	PROJECT NUMBER RQ:502206	
DRAWING NUMBER C760255-14	REV A	